

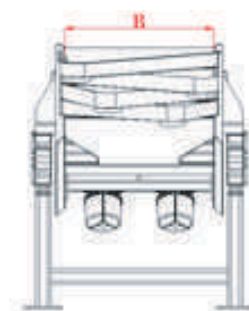
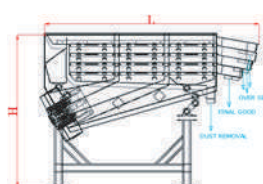
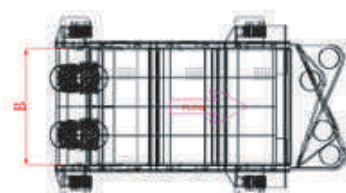


SHRI VIBRACION TECHNOLOGIES PVT LTD

## Vibrating Screen



GA:



### Technical Specification:

Max Length (mm)	3000
Max Width (mm)	600
Max No of Decks	5
Drive Mechanism	Unbalance Motors/Electromagnetic
Isolators	Glass Fiber/Oscilating Mounts/Coil Springs
Max Capacity	3tph
Finish	Smooth/ Blasted

### Principle:

In vibratory screening, forced vibration two-mass system with unbalanced motors is employed to generate the vibratory force based on the natural frequency.

### Applications:

We design and manufacture vibratory screening systems exactly to our clients' specifications and requests for a wide range of products and applications.

This vibratory screen can be made for different shapes and sizes to separate tiny (undersized) goods from the product flow. We design this screen with extra layers to increase the existing capacity, and to sort the goods in gradations, if necessary.

We also developed (Image 1) nubbin separator, which is used to separate out small fines in the production line. The detachable decks are built with the best materials in accordance with the highest sanitary qaastandards, laws, and regulations.

### Industry Applications:

Fruits & Vegetables, Pet food, Pharmaceutical, Bakery, Coal etc.



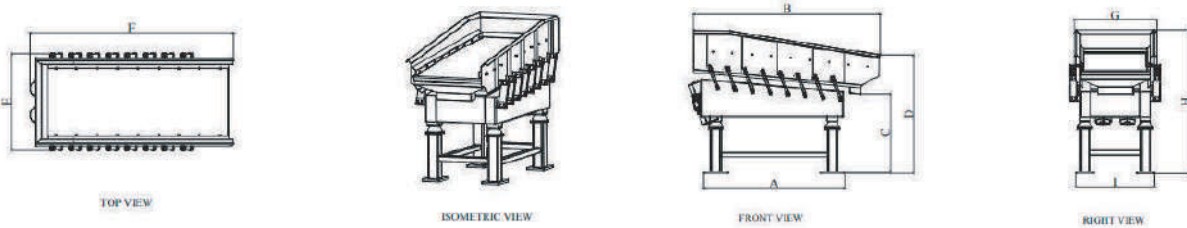


## Principle:

- The De-auqa Vibratory Conveyor Is Driven Indirectly By Two Unbalance Motors Based On Natural Frequency.
- These Shakers Shake Far More Powerfully Than Directly Powered Shakers, And They Use Less Energy And Produce Less Unwanted Vibrations That Disturb The Environment. Saving Users Invested Time And Money.
- We Manufacture De-aqua Shakers In A Variety Of Shapes And Sizes; It Is A Good Technological Solution For Separating The Water From The Product Surface Because Vibratory Conveyor Technology Allows The Shaker To Break The Water Surface Or Droplets Of Liquid On The Items And Remove The Water. Thus, Making It A Sanitary And An Effective Solution.
- The Whole Machine Can Be Installed At A Positive Inclination Angle (Adjustable). This Folding Design Angle Of The Feeding End Of The Screen Panel Is More Conducive To Dewatering Treatment And Prolongs The Running Life Of The Screen Panel.
- The deck is customizable with crimped wire meshes, perforated sheets, metal sheets or bars.
- The decks are easily replaceable by quick clamps & also equipped with quick tension system - so that the dewatering shaker is used to dewater multiple types of products.
- Our dewatering shakers produces low noise, stable mechanical performance, long running life and come with an affordable price.

**Industries Applications: Fruit & Vegetables, Mines, Minerals, etc.**

GA:



## DIAGRAM DESCRIPTION : In mm

A	B	C	D	E	F	G	H	I
2000	2645.0	1101	1678.0	1290	2714	1171	2031.0	1110

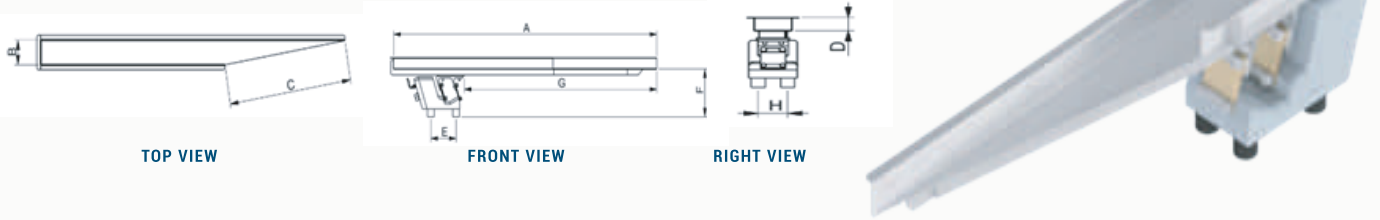
## Technical Specification:

<b><u>Dewatering Shaker</u></b>	
Max Length (mm)	3500
Max Width (mm)	1200
Drive	Unbalance Motors
Isolators	Glass Fibber/Oscillating Mounts
Max Capacity	5tph

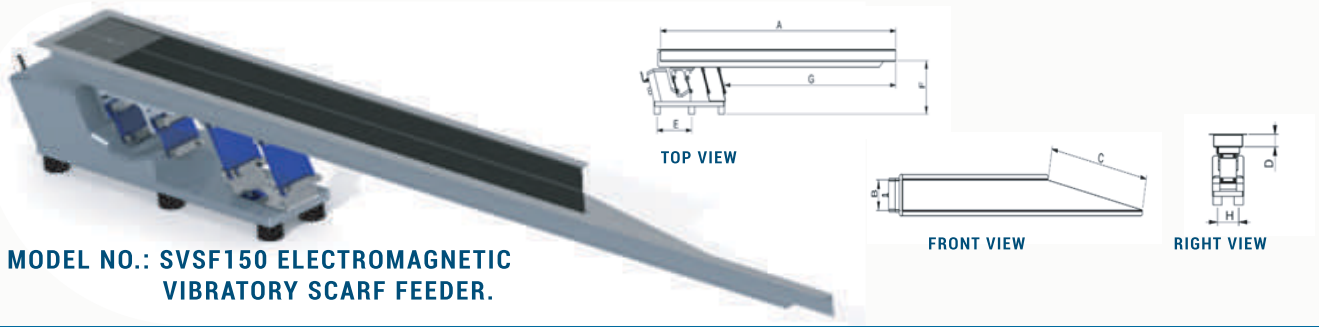
**Seasoning Vibratory Feeder:**

Electromagnetic based seasoning feeder used for having uniform feeding of seasoning powder on product which helps in making coating on product uniform, which is the USP of the is feeder. 1mtr to 2.5mtr max length can be manufactured.

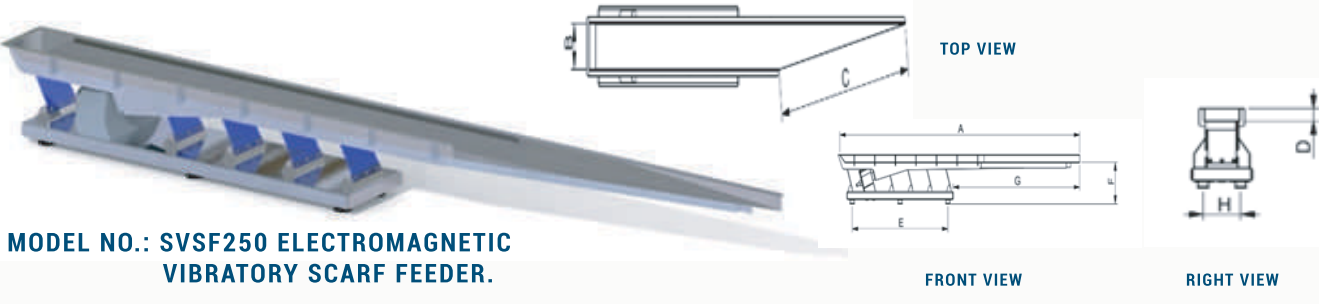
**MODEL NO.: SV02 ELECTROMAGNETIC VIBRATORY SCARF FEEDER.**



**MODEL NO.: SVSF150 ELECTROMAGNETIC VIBRATORY SCARF FEEDER.**



**MODEL NO.: SVSF250 ELECTROMAGNETIC VIBRATORY SCARF FEEDER.**



Model Name	A	B	C	D	E	F	G	H (MM)
SV02	1000	100	550	30/50	144	195	800	80
SV150	1500	120	600/800	50	410	234	1085	90
SV250	2500	150	1000/1200	50	1000	285	1330	160

We can customise the Trough sizes, Scarf cut size as per the requirement.

**Note:** Use only Digital Frequency Controller, for SV250 and SV150







## Technical Specification:

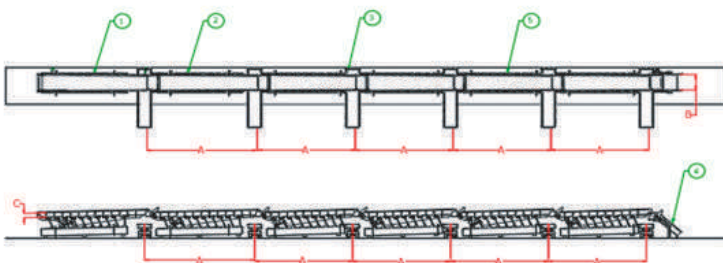
- HD-FLEX is series of inspection conveyors.
- It works on the principle of two mass balance system in vibration studies.
- The main components of this conveyor are the trough, drive unit, and a spring system.
- With a high deflection & low frequency of this conveyor, low density materials can be easily conveyed.
- When supplied without a trough assembly, the drive unit can be used with chutes, tracks, etc. (by the customer demand). The drive (a coil and core assembly) is located on the base plate and is attached to the trough. Trough and base plate is connected with leaf springs (FRP Plates) at different stabilized points.

## Applications:

- HD-Flex is used as an inspection conveyor, distribution conveyor, cross conveying, etc.
- Inspection conveyors are vibrating machine capable of conveying bulk materials uniformly for automatic or manual inspection of products.
- The HD-Flex series conveyor's raises the bar for Quality Assurance by guaranteeing an even monolayer and gently turning the product with constant flow of products for further processing.
- We provide complete product distribution systems for weighing, sorters, fryers, and driers. By-pass and re-circulation facilities can be included into our systems.
- Product flow to downstream equipment is controlled by gates of the HD-FLEX conveyor to measure the product by the optimum quantity.
- These conveyors can be combined to fit your process requirements, from seasoning through packaging.
- Our distribution system ensures that all lines are properly filled and that all individual branches are regularly and continually fed.

**Industries Applications: Snack Food, Cereals, Bakery, Pet Foods, etc.**

GA :



## Technical Chart:

Length (A) mm	Width(B) mm	Height (C) mm
1700	400	120
2000	400/600	150
2200	400/600	150/200
2500	500/600	150/200
3000	500/600	150/200
3500	500/600	150/200
3700	500/600	150/200

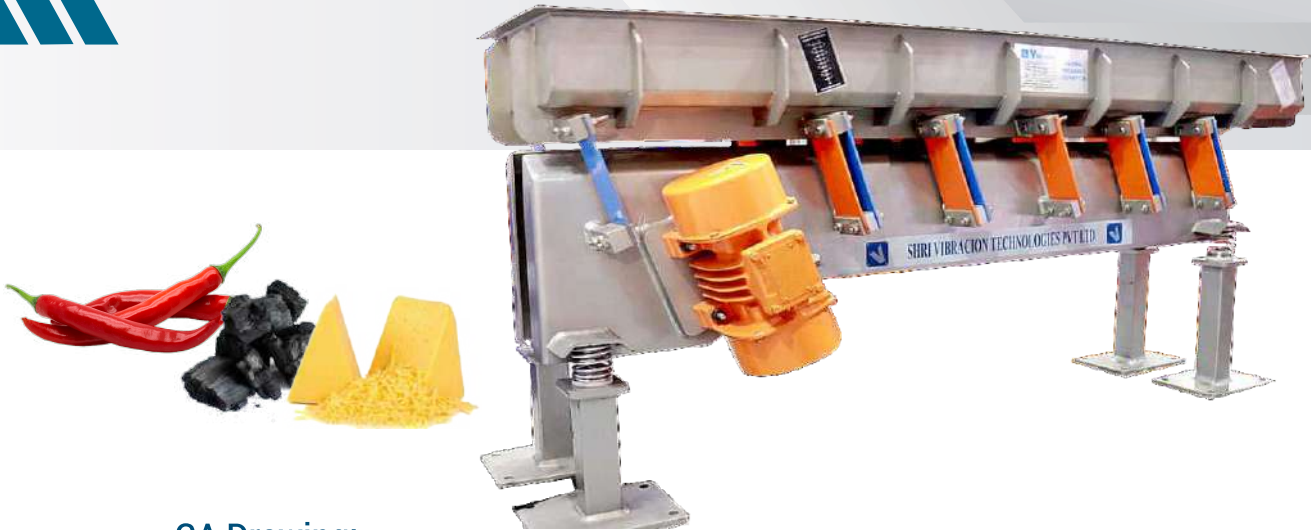
1. INFEED CONVEYOR TRAY TYPE: PLAIN TRAY CURRENT RATING: 2.5 AMPS MAXIMUM INPUT POWER:240 VOLTS 50 HZ

2. DISTRIBUTION CONVEYOR WITH GATING TRAY TYPE: PLAIN TRAY WITH GATING CURRENT RATING: 2.5 AMPS MAXIMUM INPUT POWER:240 VOLTS 50 HZ

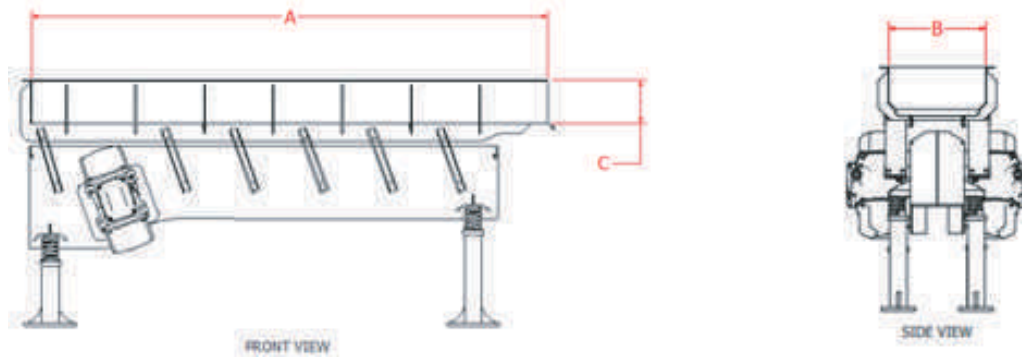
3. CROSS FEEDER TRAY TYPE: PLAIN TRAY VIBRATORY MODEL: SV100 CURRENT RATING: 2.5 AMPS MAXIMUM INPUT POWER:240 VOLTS 50 HZ

4. GATING SYSTEM FOR STAND ALONE DIVERTER ROTARY ACTUATOR INPUT: 6 BAR

5. DISTRIBUTION CONVEYOR WITH GATING TRAY TYPE: PLAIN TRAY WITH GATING CURRENT RATING: 2.5 AMPS MAXIMUM INPUT POWER:240 VOLTS 50 HZ



GA Drawing:



## Principle:

It works on the two-mass principal where one mass is used to mobilize second mass. This vibratory conveyor series are driven directly by two unbalanced motors based on natural frequency.

These shakers shake significantly more powerfully than directly powered shakers, and they use less energy and produce less unwanted vibrations that disrupt the environment. Saving users invested time and money.

## Technical Specification:

Vibrating motors provide a vibrating stroke on the bed which is passed on to the surface of the trough. The stroke achieved is comparatively very high of 12mm

Length (A) mm	Width(B) mm	Height (C) mm
1700	350	150
2000	400/600/800	150
2500	400/600/800	150
3000	400/600/800	150
3500	400/600/800	200
3800	400/600/800/1000	200

## Applications:

- Flex-Flow shakers are used to convey, classify, and grade food products of various shapes and sizes.
- These shakers provide reliable, long-lasting running life for anything from sorting fruits to eliminating undersized vegetables to removing leaves, needles, and bigger Foreign Materials.
- Also, these vibratory shakers are customisable with additional features such as sieving, dewatering, or spreading.

## Industry Applications:

- Pharmacy, Automobile, Fruit & Vegetable, Dairy, Bakery, Meat & Poultry, Seafood, Pet food, Potatoes & French Fries, etc.



**Vibración**®

SHRI VIBRACION TECHNOLOGIES PVT LTD

### Contact With Us :

Phone : +91 9821543068 | +91 9325053539

Email : [info@shrivibracion.com](mailto:info@shrivibracion.com)

Website : [www.linearvibratoryfeeder.com](http://www.linearvibratoryfeeder.com)

Reg. Office : 20/5, Jayshankar Society, Sec.21,  
Scheme 10, Yamunanagar, Nigdi,  
Pune - 411 044.